



# **Advanced Omnibus Driver**

## Manual

Autor: Phillip Polster  
Co-Autor: Niklas Polster  
Stand: 09.12.2015

## Contents

Contents.....	2
1 First steps .....	4
1.1 Installation.....	4
1.2 Setup.....	4
1.3 Liste of the ignored maps .....	5
1.4 Liste of the ignored busses.....	5
1.5 Automatic updater .....	5
1.6 Registration .....	5
2 Function overview .....	6
2.1 User name.....	6
2.2 Links.....	6
2.3 Singleplayer .....	6
2.3.1 Career mode.....	6
2.3.2 Single task.....	7
2.3.3 Shift schedule .....	7
2.3.4 Free play.....	7
2.3.5 Continue game .....	7
2.4 Rankings .....	8
2.5 Add-on Manager .....	8
2.6 Settings .....	10
2.7 Account management / License .....	10
3 The career mode.....	11
3.1 Beginning .....	11
3.2 Work for a company .....	12
3.3 Apply for a new line.....	12
3.4 Buy new busses .....	13

---

3.5	Work for several companies .....	13
3.6	Special operations .....	13
3.7	Activation .....	13
4	Play OMSI with the AOD .....	14
4.1	Start a new game.....	14
4.2	What you have to do in OMSI .....	15
4.3	More functions of the AOD Plugin-in .....	16
4.3.1	Complete trip.....	16
4.3.2	Fade out.....	17
4.3.3	Settings .....	17
4.3.4	Informations .....	17
5	Android App.....	18
5.1	Functions .....	18
5.2	Connection of the app with OMSI .....	19
5.3	Android Wear App .....	19
5.4	Earn AOD coins with the app .....	20

# 1 First steps

## 1.1 Installation

The Advanced Omnibus Driver can be downloaded on our homepage <http://aod-omsi.de>. Just click on our homepage on the menu point „Downloads“ and afterwards on the link „Software Download“.

It is necessary, that Java (if possible in the current version) is installed on the computer. The download for the latest version of Java can be found here: <https://www.java.com/de/download/>

If Java is installed, you can run the setup and install the Advanced Omnibus Driver. If Java is not or not correctly installed, you are prompted by the setup program to install it. After installation, you can use the Advanced Omnibus Driver.

Important: The Advanced Omnibus Driver needs read and write permissions to the OMSI folder, because of that it is required to run it as administrator! The best way to make this is by configuring this in Windows (right-click on the desktop icon, then click on properties, open the compatibility tab and put the check in run the program as an administrator).

## 1.2 Setup

At the first start you have to specify your OMSI path. If OMSI is installed in the default path (C:\Program Files (x86)\Steam\steamapps\common\OMSI 2) you don't have to change anything. You can also select the desired language by clicking on a flag on top of the form.

The difficulty of the career mode determines how hard the test rides are and how much money is earned per trip. We recommend the normal difficulty.

After that click on *Confirm settings and continue*.

### 1.3 Liste of the ignored maps

Next you get in a form, where you can select all installed maps, which don't work on your computer or which you don't like to ignore them in the software. You can also ignore individual lines of a map. Therefore you choose in the box on the right top a map and after that in the box below the line, which should be ignored. All lines are ignored automatically and hence not in the list.

When you are ready, click on *Ignore all selected maps from now on*.

### 1.4 Liste of the ignored busses

Now you see a very similar form, with the difference, that you can choose busses, which don't work, instead of map. On the right side of the form you can ignore individual bus models, with the same principle as before (for example the buses with manual gear, if you only want to drive automatic buses).

Now it is important to select all AI buses, if you have installed some (e.g. HH109\_Stadtbus\_HHA\_AI), so you won't get assigned these.

When you have setup all, click on *Ignore all selected buses from now on*.

### 1.5 Automatic updater

Now the updater appears, which downloads the necessary Plug-in. After this process the software has to be restarted. By the way, the updater opens automatically when a new version of the software is available.

### 1.6 Registration

After restarting the software, you see the registration form. For using the software, you need an account. Just enter your e-mail address and your desired password in the respective fields or click on *Register*. Your account will be created and you get logged in automatically. Now the main menu opens.

## 2 Function overview

### 2.1 User name

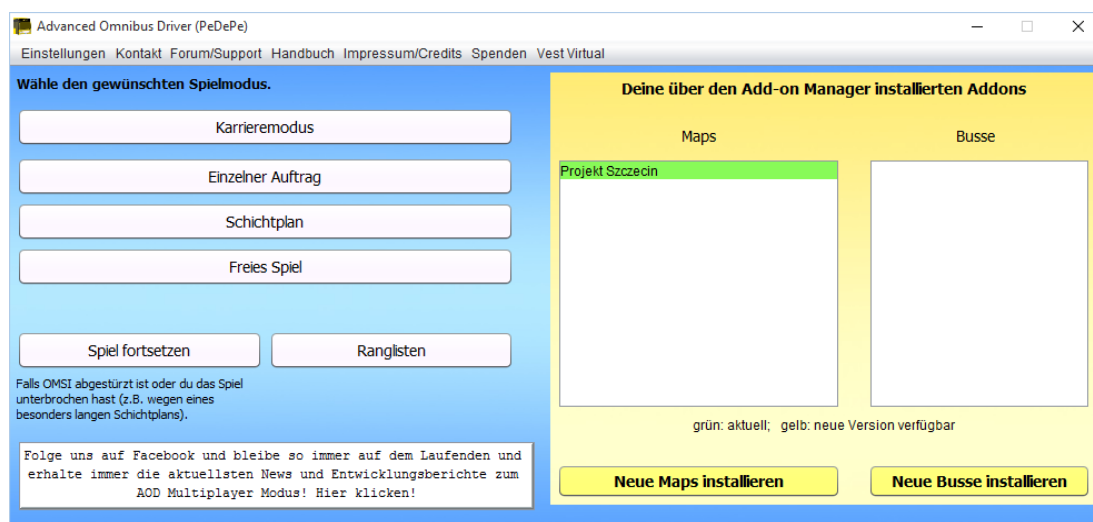
On you first login you should change your username. Therefore just enter the desired username in the appropriate field and click on the button *Change*.

### 2.2 Links

In the main menu you can find several links in the menu bar. Here you can get in contact with us, write wishes and feedback in our forum, make support requests, donate and see statistics about the usage of the maps and buses.

### 2.3 Singleplayer

In the Singleplayer mode you can either begin a new game or continue a saved game. If you start a new game, you have to choose a game mode.



Here is a description of all game modes:

#### 2.3.1 Career mode

First, you need to apply for a map and pass the test drive, then you can work on this map. For each ride you'll earn a salary that varies depending on the map. With that money you can buy some new lines and buses or apply for a

new map. If you want, you can also use your own purchased bus, but then you have to pay the fuel yourself.

You can find a detailed description of all functions of the career mode in chapter 3.

### 2.3.2 Single task

Choose all maps and busses you want to play at the moment. Afterwards you will get a contract from one of the chosen maps, which you have to play. After completion you can request a new contract (starting from the place, where you are at that moment).

### 2.3.3 Shift schedule

Choose all maps and busses you want to play at the moment and enter how long you want to play. Afterwards you will receive a random generated shift schedule for one of the chosen maps (which mostly consists of several trips), which you have to play.

### 2.3.4 Free play

Play OMSI normally without task, just with the extra Advanced Omnibus Driver features.

### 2.3.5 Continue game

You can also interrupt your shift and continue later. Doing this you have to pay attention to close OMSI only at the end of a tour, after the schedule evaluation appeared.

To close the game properly, you don't have to mind anything else. You can close OMSI and the Advanced Omnibus Driver normally.

You can find a detail description in chapter 3.

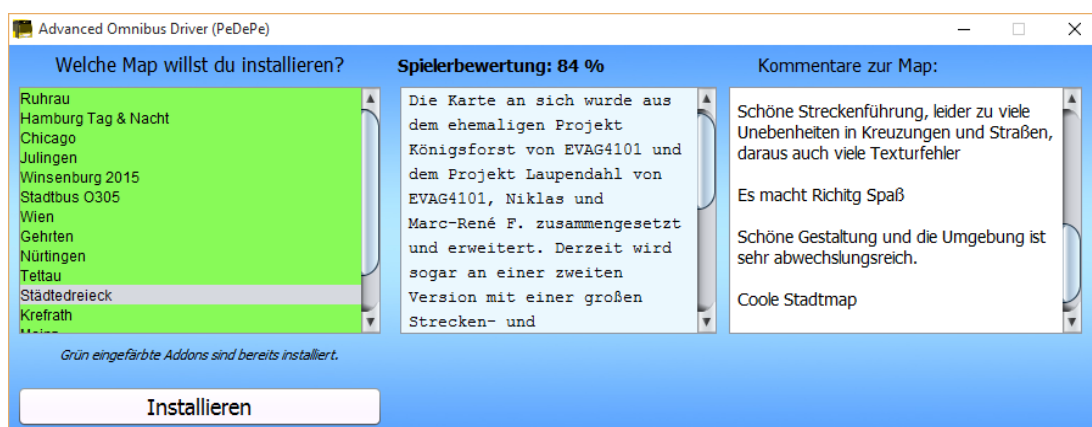
## 2.4 Rankings

In the singleplayer main form there is the button *Rankings*. You get points for every completed trip with the Advanced Omnibus Driver. In the rankings, you can find the usernames of the players, who have the most points at a respective map. Additionally there is an overview with the players, who have earned the most points in the career mode. To be able to compare yourself with other players, you also see your own rank.

## 2.5 Add-on Manager

The Advanced Omnibus Driver has an integrated Add-on Manager, which simplifies the installation of new maps and buses. In the main form of the Singleplayer you have an overview with all maps and buses, which you have installed with the Add-on Manager. Green marked add-ons are up-to-date, but for yellow marked add-ons an update is available, which should be installed.

When you want to install a new add-on, you first see an overview with all available add-ons (the green marked add-ons are already installed). By clicking on an add-on, you see a description of the add-on. Furthermore you can see how other players rated the add-on (average rating in percent as well as comments from other players).

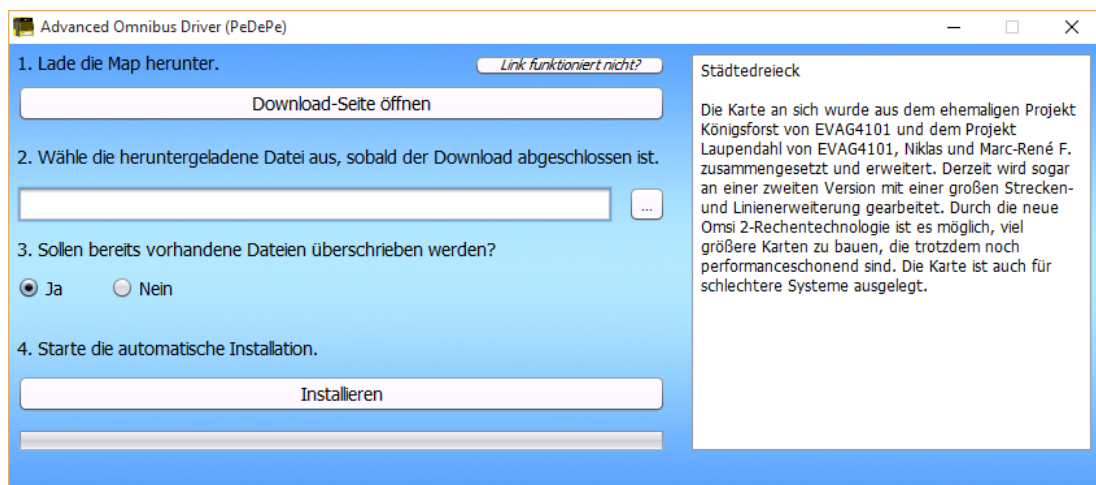


Once you have chosen an add-on and clicked on *Install*, the Advanced Omnibus Driver checks, which additional add-ons are required. If you haven't got all of them a new form will appear, where you see all required add-ons. You already have the green marked ones and you can install the others automatically



by choosing them and clicking on *Install*. After installing all required add-ons you can click on *Continue*.

Now you can see the installation form. There is a step by step tutorial about the installation. You first have to download the file by clicking on *Open download page*. Then a browser window will appear, where you can download the respective add-on. We were not always allowed to link a download link directly, so you see a description (on the right side of the form) on how to find the downloadbutton on the linked page.



After downloading the add-on, you have to select the path to the downloaded file. You can do that by entering the path manually or with the Windows Explorer (Button „...“).

In the next step you have to decide, whether already existing files in the OMSI path should be overwritten (if files already exist).

Finally, you only have to click on *Install* and the add-on will be installed automatically.

The add-ons, which were installed with the Advanced Omnibus Driver, can also be uninstalled. Therefore you have to go in the form, where all add-ons are listed, select the desired add-on and click on uninstall. All files, which were added by the installation will be deleted now.

## **2.6 Settings**

In the main menu you can open the settings by clicking on the button *Settings*. There you can change the language and adjust the list of the ignored maps and buses.

## **2.7 Account management / License**

Here you can see the status of your license (whether you have a lifetime license or when your license will expire). If you haven't got a lifetime license yet, you can either buy one or expand your license by completing free offers in the AOD Android App (like downloading apps). If you have received a code from us, you can enter it here.

Additionally you can change your password here.

### 3 The career mode

Here you can find more details about the *career mode*.

The screenshot shows the 'Advanced Omnibus Driver (PeDePe)' interface. At the top, it displays 'Deine Punkte: 15248' and 'Fortschritt zum nächsten Rang: Rang: 20' with a progress bar. The account balance is 'Dein Kontostand: 316 €'. There are two checked options: 'nur passende Busse zur Map zulassen' and 'nur passende Busse zur Linie zulassen'. A large button says 'Schicht starten' with the date '05.09.2015' below it. A list of locations shows 'Wiesenbach (100 %)' selected, followed by 'Meckesheim (100 %)', 'AM AddOn 1 (100 %)', 'Gladbeck (15 %)', 'Berlin-Spandau (25 %)', and 'Projekt Szczecin 4.0.1 (29 %)'. A list of lines shows '101', '103', '102', '202', and '201'. Buttons for 'An anderem Ort bewerben' and 'Neue Linie beantragen' are present. Below, it shows 'Du besitzt folgende Busse:' with a list: 'O405N<sup>2</sup> - Aussenschwenktüren Power', 'NG272 - GN92', and '395.55'. A warning message states: 'Wenn du die Karriere zurücksetzt wird alles gelöscht, was du freigeschaltet hast und dein Kontostand wird auf 0 € gesetzt. Dieser Schritt kann nicht rückgängig gemacht werden!'. Buttons for 'Karriere zurücksetzen' and 'Einen neuen Bus kaufen' are at the bottom.

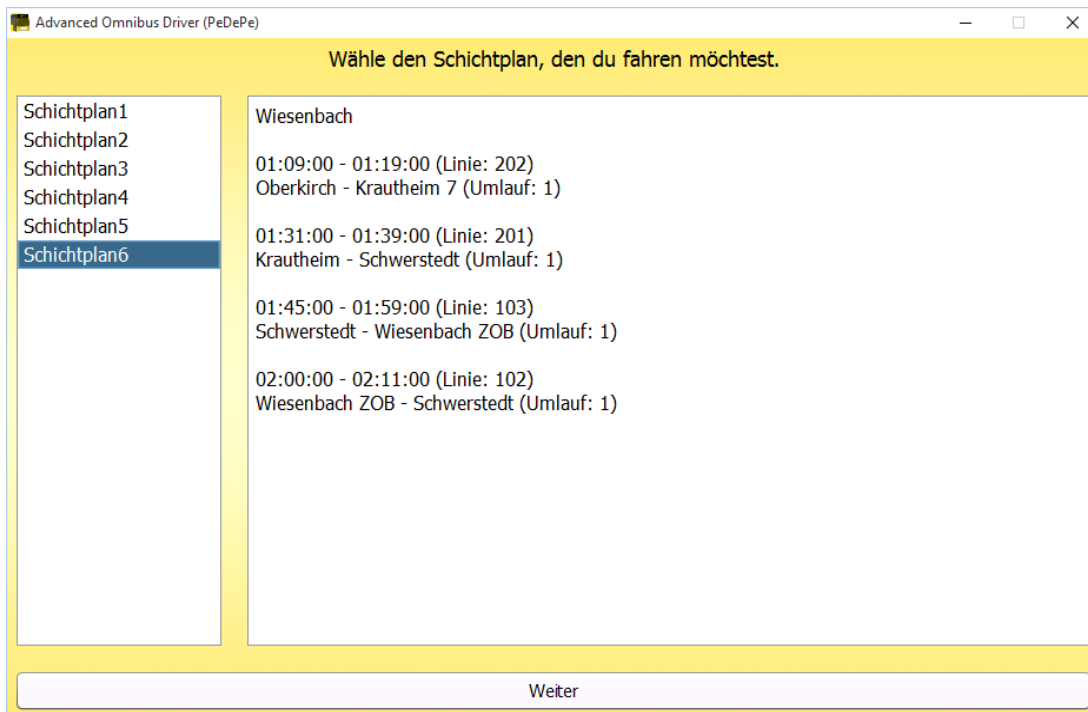
#### 3.1 Beginning

At the beginning of the career mode, you have to apply at a new company. Before you get employed you have to pass a test drive successfully. If you're not successful you can either try it again or apply at another company. Every company has different demands on employees.

Every company has a different salary bonus. If you want to earn much money, you can choose the company by the salary bonus.

### 3.2 Work for a company

After passing a test drive, you can work for this company. You get one or two lines (depends on the map). When you drive a shift, you get a schedule which includes the assigned lines. You get several schedules to choose from.



You can choose the one you like most. After finishing a shift successfully you get a salary for the shift. It depends on the duration and your service.

### 3.3 Apply for a new line

As soon as you have earned enough money, you can apply for a new line on the map. Before it gets unlocked, you have to pass a test drive again. Each attempt costs money, so give your best!

Before the test drive, you can see how many percent you have to reach to pass the drive and how much it costs. If you pass the test drive, the line will be added to your existing lines and can appear in shift schedules.

### **3.4 Buy new busses**

Normally you get a bus from the company, but if you want to drive a specific bus, there is the possibility to buy your own one and drive with it. After buying a bus you can choose before a shift which bus you want to drive with. If you drive with your own bus, you have to pay the fuel costs.

### **3.5 Work for several companies**

You can also work for several companies. When you have enough money, you can apply at a new company. If you work for several companies you can choose before every shift for which company you want to drive.

### **3.6 Special operations**

It is possible that you have to help out for an ill colleague at another company. You can decide if you want to help or not. You haven't got any disadvantages if you reject, but it's more diversified.

### **3.7 Activation**

The career mode isn't available for free. It can be bought in the form *Account management*. After buying, the game mode is unlocked forever.

You can find more information about the purchases in chapter 2.7.

## 4 Play OMSI with the AOD

### 4.1 Start a new game

To start a new game, you just have to click on the game mode you want to play. If you have chosen single task, shift schedule or free game, a new form opens where you can choose your desired maps and buses:

Advanced Omnibus Driver (PeDePe)

**Wähle alle Maps und Busse aus, auf die du gerade Lust hast.**

Alle auswählen    Alle abwählen    Alle auswählen    Alle abwählen

AM AddOn 1

- Berlin-Spandau
- Gladbeck
- Meckesheim
- Projekt Szczecin 4.0.1
- Wiesenbach

Zugewiesener Bus des Betriebs

- Zugewiesener Solobus des Betriebs
- Zugewiesener Gelenkbus des Betriebs
- 395.55
- NG272 - GN92
- O405N<sup>2</sup> - Aussenschwenktüren Power

Gewünschte Spieldauer:  Minuten

dd.mm.yyyy

Wähle das Datum, an dem du spielen möchtest:  Samstag

Wann möchtest du anfangen zu fahren?    zufällige Uhrzeit

Zurück    Weiter

Additionally you can choose whether you want to play at a specific time or at a random time. In the gamemode shift schedule you can also enter how long the shift should be.

After setting up everything, you can click on *Next*.

Now you see the settings form:

On the right side you can see a description of your tour. Now you can choose how many minutes before departure time you want to start (the software automatically sets the right time in OMSI). Afterwards you have to check if the right entry point is selected.

Also check whether the right Hof-file is chosen. If a wrong one is selected, choose the right one from the list. If you want to use a special Hof-file, which isn't shown in the list, you can choose it by clicking on the button next to the selection („...“). By the way, you don't have to make sure if the hof-file is in the right bus path – the Advanced Omnibus Driver checks this automatically.

In this form you can also change the desired repaint, license plate and weather.

After you have setup everything, click on *Next*. The software prepares everything now and starts OMSI automatically. Additionally a new form opens, which must be opened while playing. Don't close it, before you have closed OMSI!

## 4.2 What you have to do in OMSI

After OMSI has started, you can see a new bar on the top right. You just have to click on „Start!“ in the main menu. The Advanced Omnibus Driver has already set up everything correctly and generated a fitting situation with the right bus, at the chosen entry point with the set time.

You can directly start your tour. After reaching the destination and the OMSI timetable evaluation appeared, you can click on the button „Finish tour“ in the bar. Now you get a detailed evaluation about your tour and your points.

#### Special hint, if you drive a shift schedule

If you drive a shift schedule, you first have to drive the complete schedule (all tours), before you click on „Finish tour“. Otherwise the shift will be canceled.

Additionally you have to change the timetable in OMSI, after reaching your first destination. You can see your tours in the AOD bar, by clicking on „Informations“ -> „See schedule“.

### **4.3 More functions of the AOD Plugin-in**

The additional AOD info bar has many more features. You can see the time, speed and the number of passengers. After setting up the IBIS you can also see the next stop and the destination stop.

A stop request can also be seen in the bar: If a passenger presses the stop request button, the bar gets yellow and „Stop request“ is added.

When you crash into a vehicle or an object, the info bar gets red and the word „Accident“ is added. So you can notice every accident.

In addition to the info bar there are 4 buttons.

#### **4.3.1 Complete trip**

After reaching your destination stop, you can click here to get a detailed evaluation. In the career mode you finish the test drive, by clicking there.



#### 4.3.2 Fade out

With this button you can fade out the info bar. A new button appears, with this you can fade in the info bar.

#### 4.3.3 Settings

By clicking on this button a new menu appears, where you can change some settings. You can adjust the transparency of the info bar, set the refresh rate and the position of the info bar. Additionally, you can replace the „AOD fade-in“ button by a small, discreetly button on the top left of the screen.

#### 4.3.4 Informations

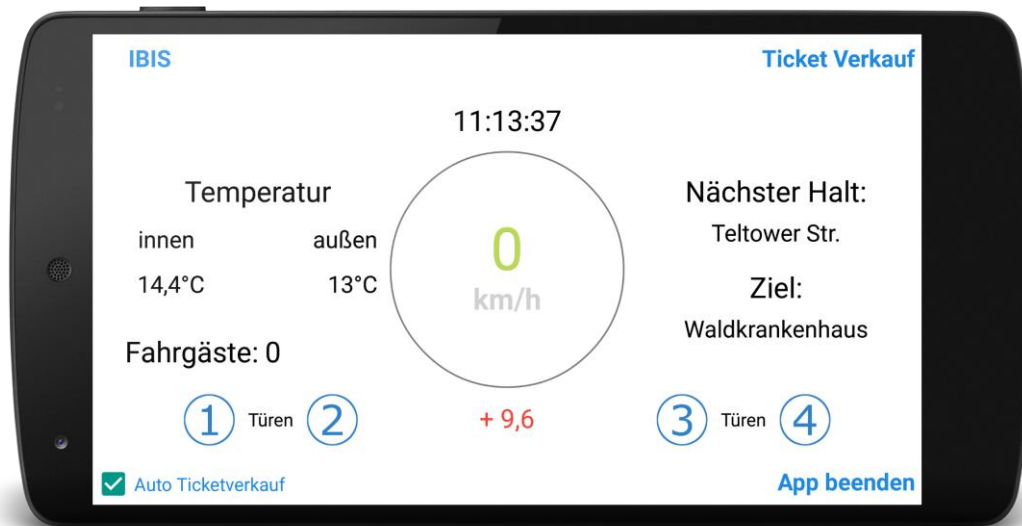
Here you can see several useful informations. You can see your actual timetable (can be moved to another monitor), the IBIS codes of the map listed in a table and your actual assignment.

## 5 Android App

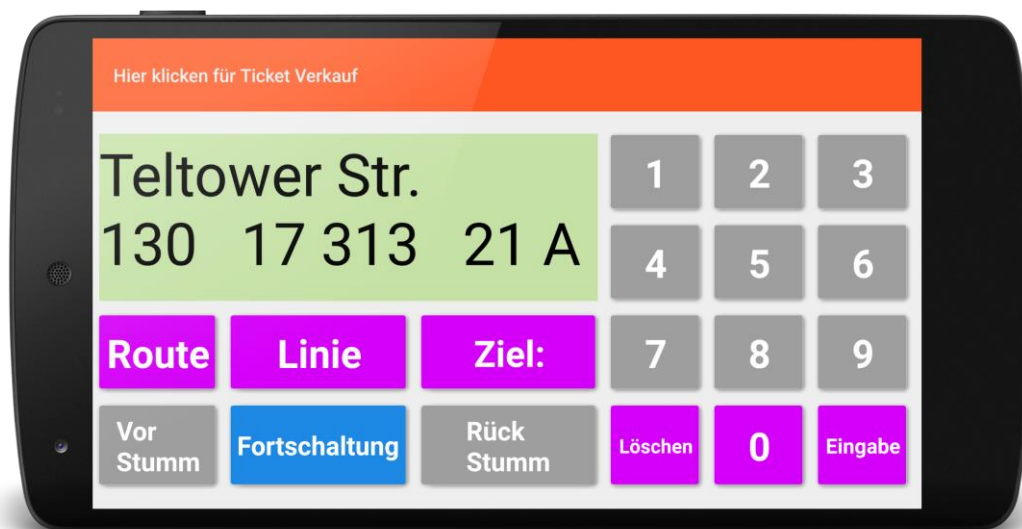
There is an Advanced Omnibus Driver App in the Google Play Store. This app can be used optionally and improves the gaming experience.

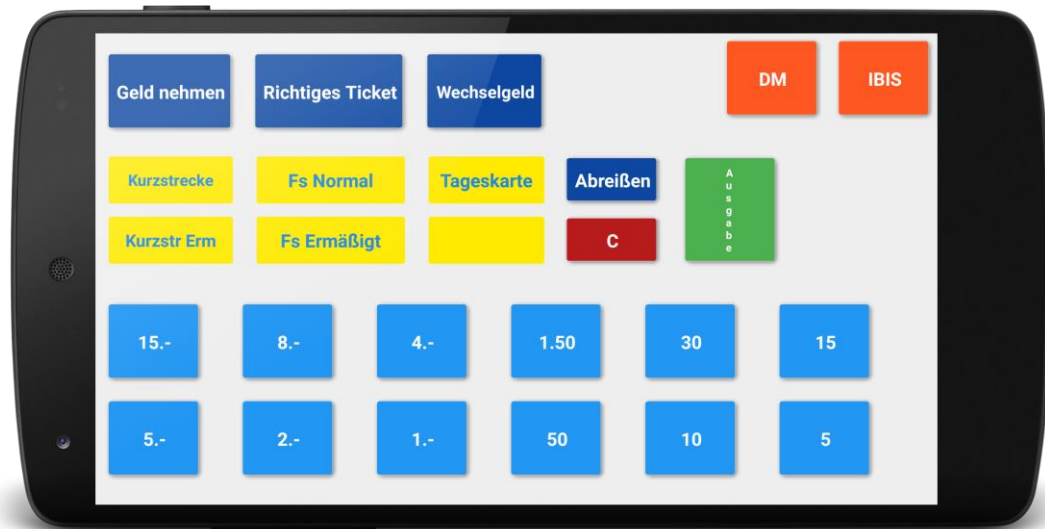
### 5.1 Functions

In the main menu, you can see all important informations. Additionally, you can open the doors.



You can also control the IBIS and sell tickets with the app.





## 5.2 Connection of the app with OMSI

After starting OMSI with the AOD software, you can connect the app with OMSI. In the connection menu you can enter your IP adress and press on the red button. Alternatively you can click on the blue symbol and the app searched automatically for the correct IP adress.

It is necessary, that the phone and the PC are in the same network. So the app must be connected to WLAN and the PC to WLAN or LAN.

If the connection is anyway not successfull, there are several solutions:

- **Disable firewall or add exception**
- Disable anti-virus program or add exception
- Unlock port 2502 at the router

## 5.3 Android Wear App

When the smartphone is connected with OMSI, you can additionally start the AOD Android Wear Smartwatch app. There you can see the OMSI time on your real watch and the watch vibrates at a new stop request.

#### **5.4 Earn AOD coins with the app**

The AOD app has the possibility to earn AOD coins by completing free offers. With these you can unlock the upgrades in the software. You can also earn some AOD coins with the app for free and buy some AOD coins; so you get the upgrades cheaper.